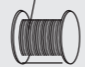

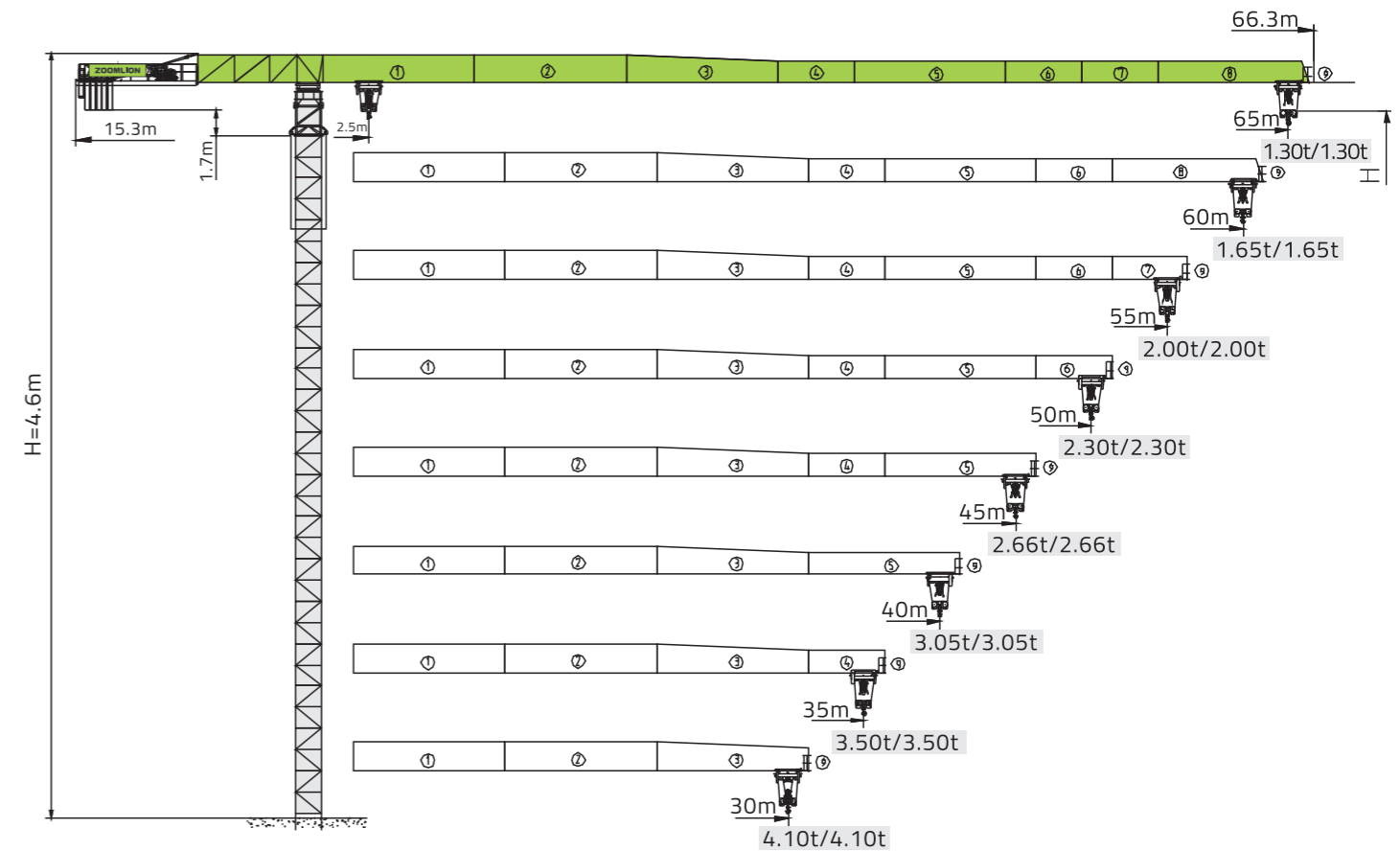



Mechanisms				b		b			kW
				IV	V	IV	V		
Hoisting	6t	H24WP15-440-b	m/min	40	80	20	40	440m \varnothing (6 layers)	24/24
			t	3	1.5	6	3		
		H25FP15-440-e (Optional)	m/min	40	80	20	40	359m \varnothing (5 layers)	25
			t	3	1.5	6	3		
	8t	H30FP20-400	m/min	40	80	20	40	400m \varnothing (6 layers)	30
			t	4	2	8	4		
		QP8100D2 (Optional)	m/min	50	100	25	50	610m \varnothing (6 layers)	37
			t	4	2	8	4		
Trolleying	BP40B		m/min						4
Slewing	HPW75.130A		r/min	0~0.7					2x7.5
Travelling	ZA52-D		m/min	0~25					2x5.2
	6t	380V($\pm 10\%$) 50Hz		43.0+2x5.2 (kW) 44.0+2x5.2 (kW)					
	8t	380V($\pm 10\%$) 50Hz		49.0+2x5.2 (kW) 56.0+2x5.2 (kW)					



T6513

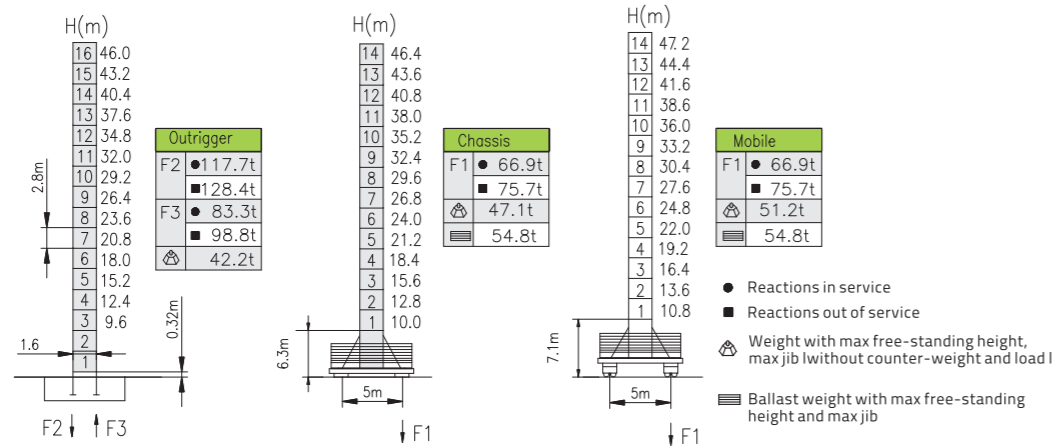
6t/8t



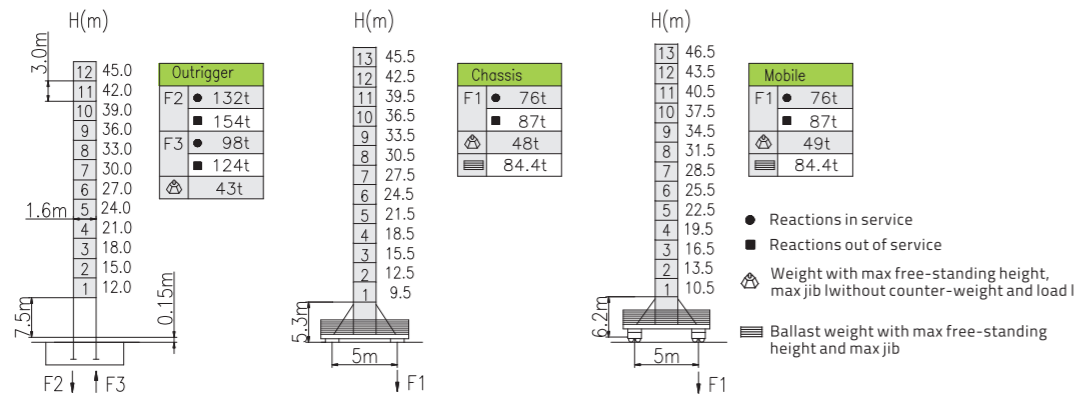
		 (Kg)	PHZ2900	PHZ1800
65m	15.3m	17400	6	0
60m	15.3m	16300	5	1
55m	15.3m	16300	5	1
50m	15.3m	14500	5	0
45m	15.3m	13400	4	1
40m	15.3m	11600	4	0
35m	15.3m	10500	3	1
30m	15.3m	8700	3	0

Mast & reactions

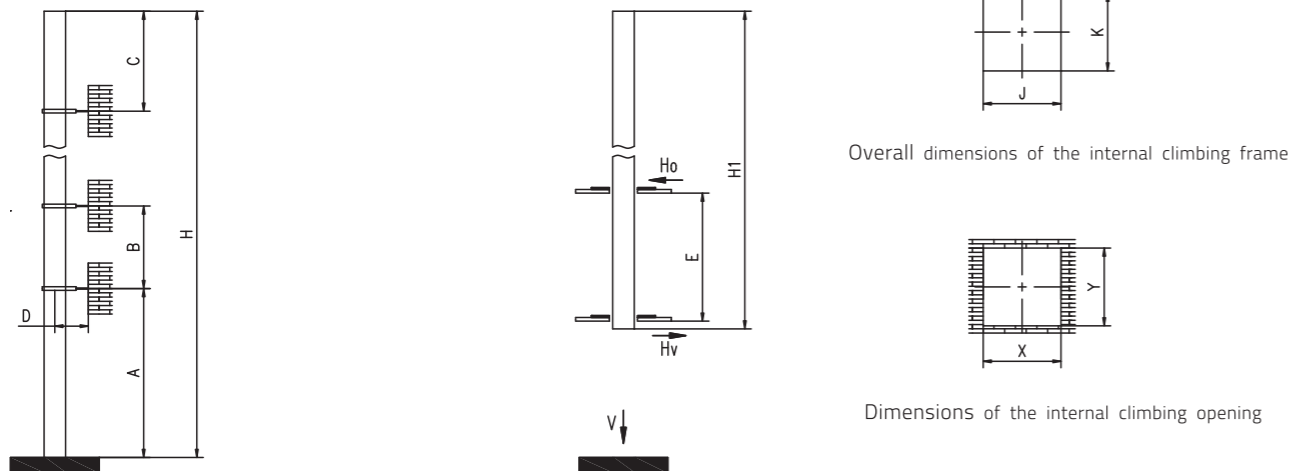
B1A



L46A1



Anchorage & internal climbing



- Reactions in service
- Reactions out of service

Mast	Jib(m)	A (m)	B (m)	C (m)	D (m)	H (m)
B1A	65	45.0	25.2	≤40.2	5	≤107
	65	45.0	22.4	≤37.4	5	107≤H≤220
L68A1	65	48.9	36	≤47.1	5	≤168
	65	48.9	36	43.1	5	168≤H≤200
L46A1	65	33	24	≤33	5	≤186
	65	33	21	≤26	5	186≤H≤200

Mast	Jib(m)	h (m)	E (m)	V (t)	Ho(t)		Hv(t)		J (m)	k (m)	X (m)	Y (m)
					●	■	●	■				
B1A	65	36.4	8-12	84.6	37.3	23.2	22.2	14.3	2.6	2.56	≥2.7	≥2.7
L68A1	65	42	12-16	92.7	31.0	21.7	15.5	11.3	3.29	2.78	≥3.5	≥3.0
L46A1	65	45	7-11	74.45	56.53	22.39	30.58	16.58	2.9	2.4	≥3.0	≥2.5

Load diagram

6t

R(m)		Max capacity (m/t)	2.5~15	20	25	30	35	40	45	50	55	60	65
65	bd	2.5-36.29/3.00	3.00					2.64	2.25	1.94	1.69	1.48	1.30
	bb	2.5-20.37/6.00	6.00	4.69	3.74	3.07	2.57	2.18	1.87	1.61	1.40	1.23	
60	bd	2.5-38.97/3.00	3.00					2.90	2.48	2.15	1.88	1.65	
	bb	2.5-21.86/6.00	6.00	5.11	4.09	3.37	2.83	2.41	2.07	1.80	1.58		
55	bd	2.5-40.73/3.00	3.00					2.63	2.28	2.00			
	bb	2.5-22.84/6.00	6.00	5.39	4.32	3.56	3.00	2.56	2.21	1.93			
50	bd	2.5-40.93/3.00	3.00					2.65	2.30				
	bb	2.5-22.95/6.00	6.00	5.42	4.35	3.58	3.02	2.58	2.23				
45	bd	2.5-40.93/3.00	3.00					2.65					
	bb	2.5-22.71/6.00	6.00	5.42	4.34	3.58	3.02	2.58					
40	bd	2.5-40.00/3.00	3.00										
	bb	2.5-22.71/6.00	6.00	5.35	4.29	3.54	2.98						
35	bd	2.5-35.00/3.00	3.00										
	bb	2.5-22.16/6.00	6.00	5.20	4.16	3.43							
30	bd	2.5-30.00/3.00	3.00										
	bb	2.5-21.90/6.00	6.00	5.11	4.10								

8t

R(m)		Max capacity (m/t)	2.5~15	20	25	30	35	40	45	50	55	60	65	
65	bd	2.5-28.88/4.00	4.00				3.82	3.14	2.64	2.25	1.94	1.69	1.48	1.30
	bb	2.5-15.93/8.00	8.00	6.13	4.69	3.74	3.07	2.57	2.18	1.87	1.61	1.40	1.23	
60	bd	2.5-31.00/4.00	4.00				4.00	3.44	2.90	2.48	2.15	1.88	1.65	
	bb	2.5-17.08/8.00	8.00	6.66	5.11	4.09	3.37	2.83	2.41	2.07	1.80	1.58		
55	bd	2.5-32.40/4.00	4.00				3.64	3.07	2.63	2.28	2.00			
	bb	2.5-17.84/8.00	8.00	7.01	5.39	4.32	3.56	3.00	2.56	2.21	1.93			
50	bd	2.5-32.56/4.00	4.00				3.66	3.09	2.65	2.30				
	bb	2.5-17.93/8.00	8.00	7.05	5.42	4.35	3.58	3.02	2.58	2.23				
45	bd	2.5-32.55/4.00	4.00				3.66	3.09	2.65					
	bb	2.5-17.92/8.00	8.00	7.05	5.42	4.34	3.58	3.02	2.58					
40	bd	2.5-32.23/4.00	4.00				3.61	3.05						
	bb	2.5-17.75/8.00	8.00	6.97	5.35	4.29	3.54	2.98						
35	bd	2.5-31.43/4.00	4.00				3.50							
	bb	2.5-17.31/8.00	8.00	6.77	5.20	4.16	3.43							
30	bd	2.5-30.00/4.00	4.00											
	bb	2.5-17.11/8.00	8.00	6.63	5.11	4.10								