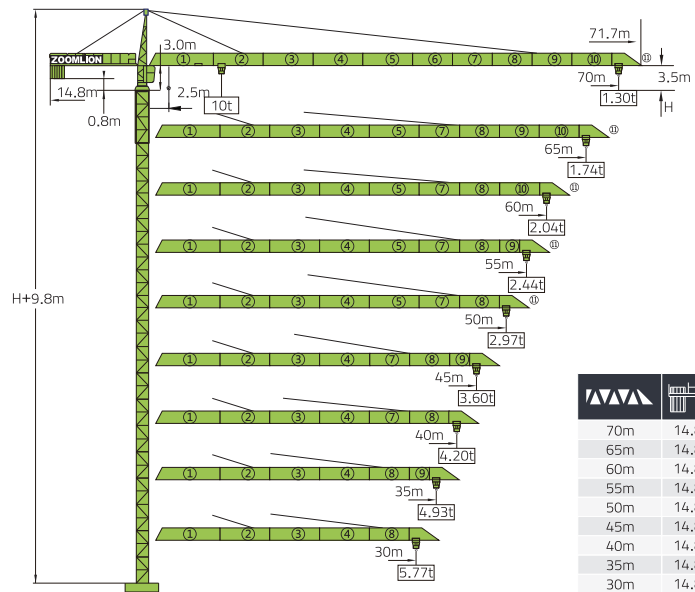


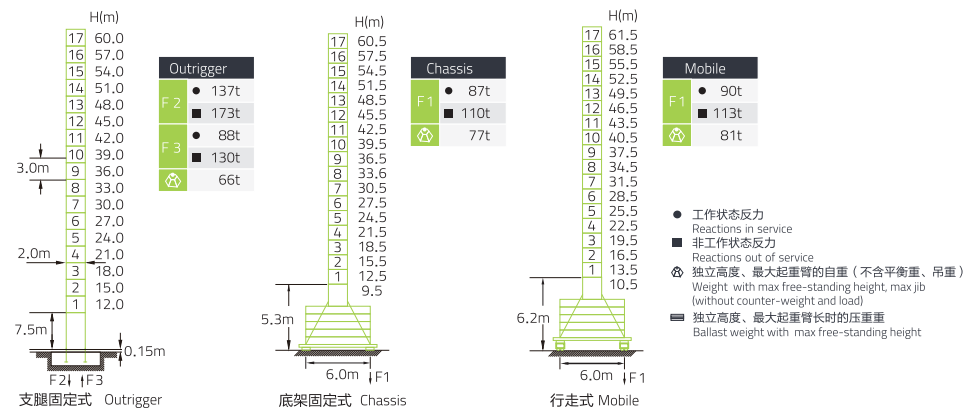
# TC7013-10



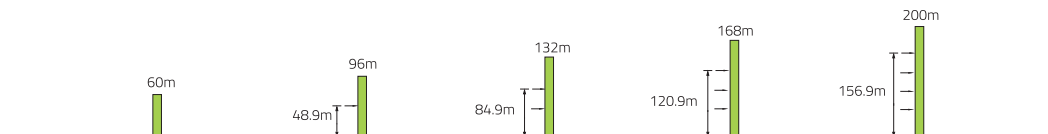
			(kg)	PHZ3000	PHZ2500	PHZ2000	PHZ1500
70m	14.8m	25000	6	2	1	0	0
65m	14.8m	22500	6	1	1	0	0
60m	14.8m	20500	6	1	0	0	0
55m	14.8m	20000	6	0	1	0	0
50m	14.8m	18500	5	0	1	1	1
45m	14.8m	16500	5	0	0	1	1
40m	14.8m	14500	4	1	0	0	0
35m	14.8m	12000	2	1	1	1	1
30m	14.8m	10000	2	1	0	1	1

Final product specification shall be in accordance with purchase order or sales contract only

## 塔身 Masts / 反力 Reactions / TC7013-10D



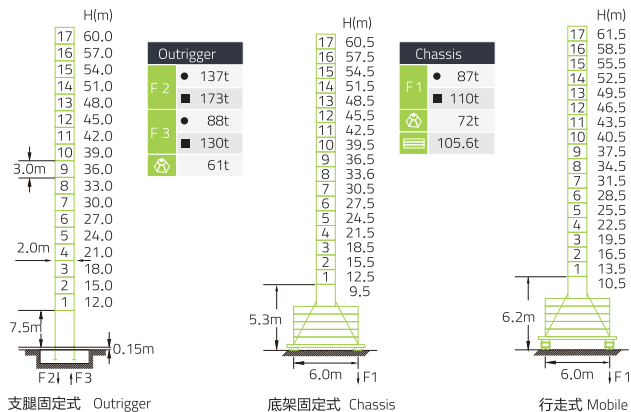
## 附着 Anchorages / TC7013-10D



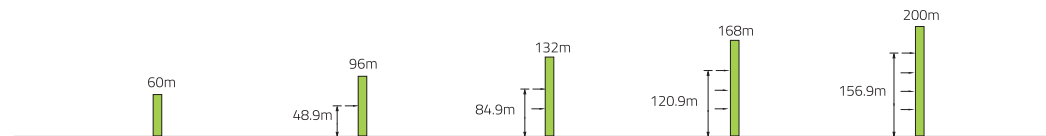
160t-m

# TC7013-10

## 塔身 Masts / 反力 Reactions / TC7013-10E



## 附着 Anchorages / TC7013-10E









## 起重特性 Load Diagrams

R(m)	Max Capacity m/t	15.0	20.0	25.0	30.0	35.0	40.0	45.0	50.0	55.0	60.0	65.0	70.0
		70 (R=71.7)	2.5~25.6/5.00	5.00		4.26	3.51	2.95	2.52	2.18	1.90	1.66	1.47
65 (R=66.7)	2.5~13.9/10.00	9.55	6.79	5.18	4.12	3.37	2.81	2.38	2.04	1.76	1.52	1.33	1.16
60 (R=61.7)	2.5~28.7/5.00	5.00		4.86	4.02	3.40	2.92	2.53	2.22	1.96	1.74		
55 (R=56.7)	2.5~15.6/10.00	10.00	7.70	5.90	4.72	3.88	3.26	2.78	2.39	2.08	1.82	1.60	
50 (R=51.7)	2.5~29.6/5.00	5.00		5.00	4.16	3.52	3.02	2.63	2.31	2.04			
45 (R=46.7)	2.5~16.1/10.00	10.00	7.95	6.10	4.88	4.02	3.38	2.88	2.49	2.17	1.90		
40 (R=41.7)	2.5~30.9/5.00	5.00		5.00	4.37	3.70	3.19	2.78	2.44				
35 (R=36.7)	2.5~16.8/10.00	10.00	8.33	6.40	5.13	4.23	3.56	3.05	2.63	2.30			
30 (R=31.7)	2.5~32.7/5.00	5.00			4.65	3.95	3.40	2.97					
	2.5~17.7/10.00	10.00	8.83	6.79	5.46	4.51	3.81	3.26	2.83				
	2.5~34.3/5.00	5.00			4.91	4.17	3.60						
	2.5~18.5/10.00	10.00	9.28	7.15	5.75	4.76	4.03	3.46					
	2.5~18.7/10.00	10.00	9.34	7.20	5.79	4.80	4.06						
	2.5~34.6/5.00	5.00			4.94	4.20							
	2.5~18.7/10.00	10.00	9.33	7.19	5.78	4.79							
	2.5~30.0/5.00	5.00											
	2.5~18.7/10.00	10.00	9.29	7.16	5.76								

# TC7013-10

■ 传动机构 Mechanisms

配置 Configuration		b.d		b.b		kW		
		IV	V	IV	V			
 起升 Hoisting	QE10100E2	m/min	50	100	25	50	60/60	540m ① (6 layers)
		t	5	2.5	10	5		
 回转 Slewing	RCV145.B.130	r/min	0~0.6				2×145 N.m	① 超出咨询我们 Consult us if overtop
 变幅 Trolleying	BP55B	m/min	0~55				5.5	
 行走 Travelling	ZA52-D B52-D	m/min	0~25				2×5.2	
	380V(±10%)50Hz	80.5+2×5.2kW						